



RA27

THE POWER OF PRODUCTIVITY

Ramset's fully automatic powder-actuated tool,
reduces downtime and fatigue on commercial jobsites



Ramset[®]
DRIVING JOBSITE SPEED

The Right Answer for Commercial Contractors

Ramset's fully automatic RA27 powder-actuated tool, reduces downtime and fatigue on commercial jobsites. The RA27 stands up to tough use for interior and exterior applications.

Power adjust dial enables user to dial down power for ideal pin embedment

More power, load for load, provides flexibility in a wide range of applications

Patented RRC (Residue Release Channel) allows tool to work longer between cleanings

Padding absorbs recoil, lowers fatigue

Belt/tether clip for safety

Swing-out scaffold hook keeps the tool within reach



RA27 Tool Specifications:

- Part number: RA27
- Weight: 5.3 lbs
- Maximum pin length without washer: 1½"
- Maximum pin length with washer: 2"
- 3-year warranty
- For use with .27 caliber loads (green, yellow, red)

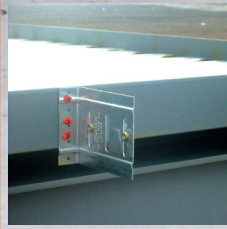
Common Applications



**TRACK-TO-
CONCRETE**



**TRACK-TO-
STEEL**



**EXTERIOR
CLADDING
CLIPS**



**DEEP LEG
TRACK**



**ELECTRICAL/
UNISTRUT**



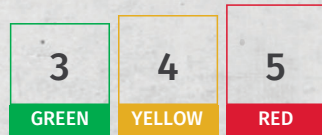
**HAT
CHANNEL**



Lower pushdown force
reduces fatigue

Long-lasting piston
reduces downtime

Collar requires only
1/4 turn for quicker
cleaning



Durable magazine
providing up
to 30% longer
lifespan

RA27 Accessories

Magazine Accessory:

- Part Number: RA27MAG
- Weight: 1.3 lbs
- Maximum pin length: 11/4"

Cup/Pole Accessory:

- Cup Part Number: RA27CUP
- Pole Tool Numbers:
 - V4-6: 6' Pole
 - V4-8: 8' Pole
 - V4-EXT: 3' Extension (no trigger)

RA27 Tool Includes:

- Safety glasses
- Spall guard
- Two cleaning brushes
- Operators manual



Magazine and tool
sold separately

TRUE EMBEDMENT PINS



The Ramset .157 True Embedment Pin is sized to provide you with True Embedment depths in track up to 14 gauge. Sized approximately 1/16" longer than nominal length to provide a True Embedment. 100 per box.

PART NUMBER	PIN LENGTH		EMBEDMENT LENGTH		MASTER CARTON QUANTITY
	IN.	(MM)	IN.	(MM)	
TE12	9/16	(13.8)	1/2	(12.7)	5000
TE34	13/16	(20.6)	3/4	(19.1)	5000
TE100	1-1/16	(27)	1	(25.4)	5000
TE114	1-5/16	(33.3)	1-1/4	(31.8)	1000

Shank diameter = .157 Head diameter = .320

TRUE EMBEDMENT COLLATED PINS



The Ramset .157 True Embedment Pin is sized to provide you with True Embedment depths in track up to 14 gauge. Sized approximately 1/16" longer than nominal length to provide a True Embedment. 1000 per box. Collated for use with the RA27MAG.

PART NUMBER	PIN LENGTH		EMBEDMENT LENGTH		MASTER CARTON QUANTITY
	IN.	(MM)	IN.	(MM)	
TE12X	9/16	(13.8)	1/2	(12.7)	5000
TE34X	13/16	(20.6)	3/4	(19.1)	5000
TE100X	1-1/16	(27)	1	(25.4)	5000
TE114X	1-5/16	(33.3)	1-1/4	(31.8)	5000

Shank diameter = .157 Head diameter = .320

POWERPOINT PINS



Premium pin used for fastening into harder steel and concrete. Premium steel and hard concrete pin. 100 per box.

PART NUMBER	SHANK LENGTH		MASTER CARTON QUANTITY
	IN.	(MM)	
SP12	1/2	(12.7)	5000
SP58	5/8	(15.9)	5000
SP34	3/4	(19.1)	5000
SP114*	1-1/4	(31.8)	1000
SP178*	1-7/8	(47.6)	1000
M100BB**	1	(25.4)	4000

Shank diameter = .150 * Head diameter = .150/.180
** Shank diameter = .125/.150 with 1/2" washer
Head diameter = .300

PLATED PINS



Designed for use in concrete and structural steel applications. 100 per box.

PART NUMBER	SHANK LENGTH		MASTER CARTON QUANTITY
	IN.	(MM)	
1503K	1/2 Knurled	(12.7)	5000
1506	3/4	(19.1)	5000
1508	1	(25.4)	5000
1510	1-1/4	(31.8)	1000
1512	1-1/2	(38.1)	1000

Shank diameter = .145 Head diameter = .300

WASHERED PINS



Washer increases bearing surface against the material to be fastened. Plated pin pre-assembled with 7/8" diameter washer.

PART NUMBER	SHANK LENGTH		MASTER CARTON QUANTITY
	IN.	(MM)	
1506SD	3/4	(19.1)	1000
1508SD	1	(25.4)	1000
1510SD	1-1/4	(31.8)	1000
1512SD	1-1/2	(38.1)	1000
1514SD	2	(50.8)	1000

Shank diameter = .145 Head diameter = .300
16 gage metal washer

POWERPOINT TOP HAT PIN



Used for general purpose fastening to steel. Plated pin with top hat. 100 per box.

PART NUMBER	SHANK LENGTH		MASTER CARTON QUANTITY
	IN.	(MM)	
SP58TH	5/8"	15.9	5000

Shank diameter = .150 Head diameter = .300

RAMSET .27 CALIBER LOADS

PART NUMBER	POWER LEVEL	COLOR	PACKAGING	MASTER CARTON QUANTITY
3RS27	3	Green	All 10 shot strip 10 strips/box	10,000
4RS27	4	Yellow	All 10 shot strip 10 strips/box	10,000
5RS27	5	Red	All 10 shot strip 10 strips/box	10,000

ONE HOLE CONDUIT STRAP



Used to attach EMT conduit or armored cable to concrete. PowerPoint fastener pre-assembled to a 16 gage conduit strap. 100 per box.

PART NUMBER	DESCRIPTION	MASTER CARTON QUANTITY
38HSS10*	3/8" Hole strap with w/1 premium pin	500
34HSS10	3/4" Hole strap with w/1 premium pin	500

Shank diameter = .125/.150 Head diameter = .300 *38HSMP034 = 18 gage, 200 per jar

THREADED ROD HANGER



For suspended ceilings, piping, and other items using 1/4" or 3/8" threaded rod. PowerPoint fastener pre-assembled to a 16 gage threaded rod hanger. 100 per box.

PART NUMBER	DESCRIPTION	MASTER CARTON QUANTITY
14TRHSS10	1/4" Rod hanger w/1" premium pin	500
38TRHSS10	3/8" Rod hanger w/1" premium pin	500

Shank diameter = .125/.150 Head diameter = .300

RA27

ramset.com