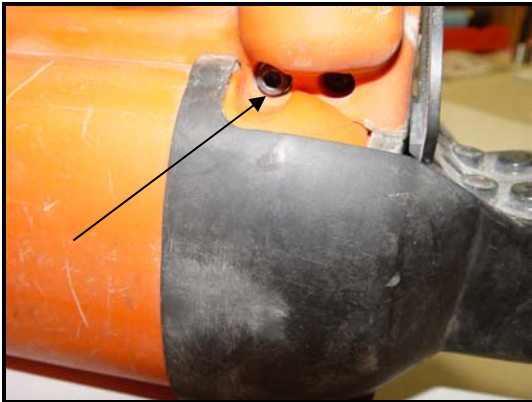


In servicing the T3 tool one of the first steps is to separate the Handle Assembly from the Tool Housing Assembly. After these components have been separated, work can be performed on the component in need. **Before beginning any repair, be sure the fuel cell and battery have been removed from the tool!** The pictures and text below will assist you in separating the Handle Assembly from the Tool Housing Assembly. On T3 magazine equipped tools, the fastener magazine must first be removed.



1. Begin disassembly by removing the four (4) Cap Screws. A 5/32-inch hex key wrench is required for removal.



2. Remove the socket head cap screw at the base of the handle using a 5/32-inch hex key wrench.



3. After the screw is completely removed, push the Handle/Housing Bushing through the handle

T3SS tool is shown



4. Carefully lift the Handle Assembly from the Housing Assembly. Carefully lift the bottom of the handle at a slight angle to clear the fuel connector; then lift straight up to clear the fan blades from the motor bore.



5. The Handle and Housing assemblies are now separated. Work can now be performed on the assembly needing service.
6. When assembling the Handle back to the Housing, perform the above steps in reverse order.



TIP: When reinserting the Handle/Housing bushing, sometimes it may be necessary to firmly push on the handle and align the bushing hole with a screwdriver or other object before inserting the bushing itself. The hex on the bushing **MUST** align with the hex recess in the handle.